



# INSTALLATION INSTRUCTIONS

# TIVOFLEX™ ACCENT LIGHTING 7157003



Read instructions entirely before starting installation.

**NOTE: All power cord end-preps must be made by factory. Any stretching/pulling, modifying, end-prep changes made in the field will void warranty.**

\* Limited one year warranty

\*\* 18 month warranty with Tivoli certified installer (consult factory for list)

Call Tivoli, LLC with any questions.

Tivoli's TivoFlex is an indoor/outdoor low voltage lighting system used mostly for direct or indirect lighting designs.

### Caution:

TivoFlex is designed to work with Tivoli Class II 24V DC transformers only. Use of any other power source will cause damage, shorten the life of the fixture and may void the warranty.

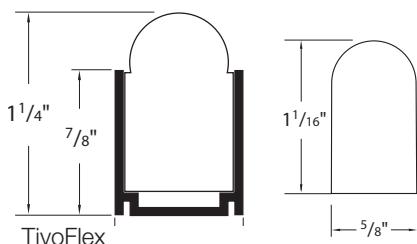
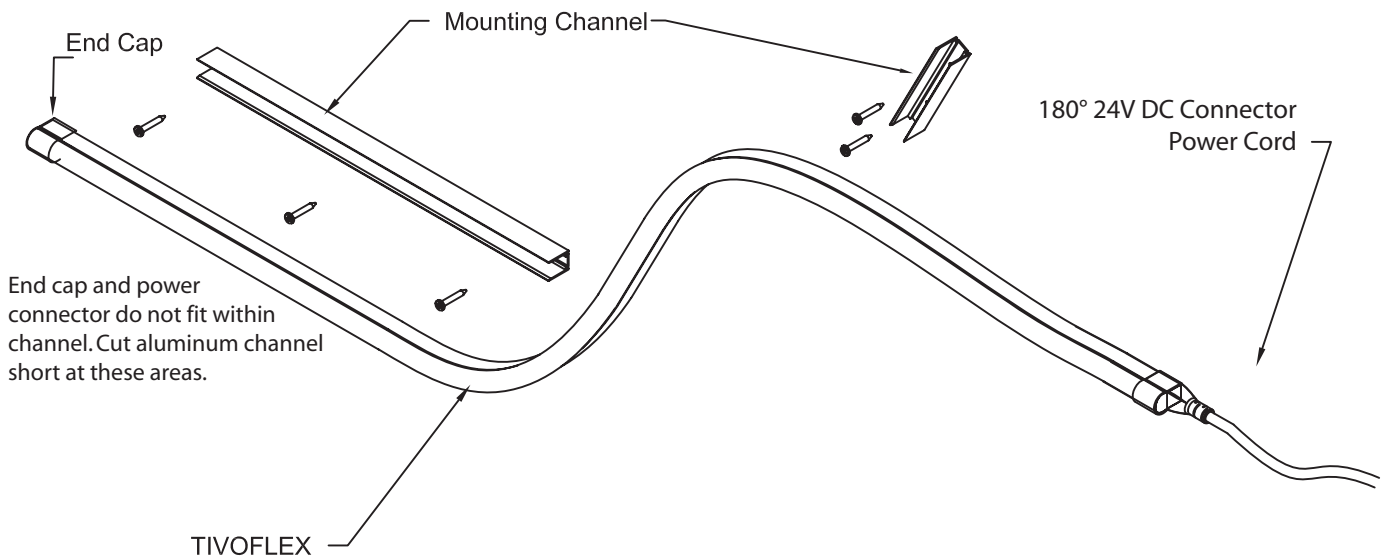
Be sure power is turned off before installing.

### TOOLS/MATERIALS REQUIRED

- Measuring tape
- Chop saw (designed to cut PVC and aluminum)
- Screw Gun
- PVC cutters
- Tin Snips
- Channel Lock Pliers
- GE II Silicone (not included)
- 3M 460EG Adhesive (not included)

### VERTICAL MOUNTING.

When mounting TivoFlex vertically, it is important that you start installation from bottom and press fit into channel as you go up. Mounting TivoFlex from "top down" will damage TivoFlex and void warranty.



**Outdoor installations require shrink tube applied with silicone over end cap to prevent water intrusion and corrosion.**

Failure due to corrosion without shrink protection is not covered by product warranty.

# TIVOFLEX™ ACCENT LIGHTING 7157003

## INSTALLATION INSTRUCTIONS



**Step 1:** Measure area where system is to be applied.

**Step 2:** Gently unroll TivoFlex. Do not stretch or pull, doing so can damage TivoFlex internal connections and void warranty.

**Step 3:** Lay TivoFlex along desired area.

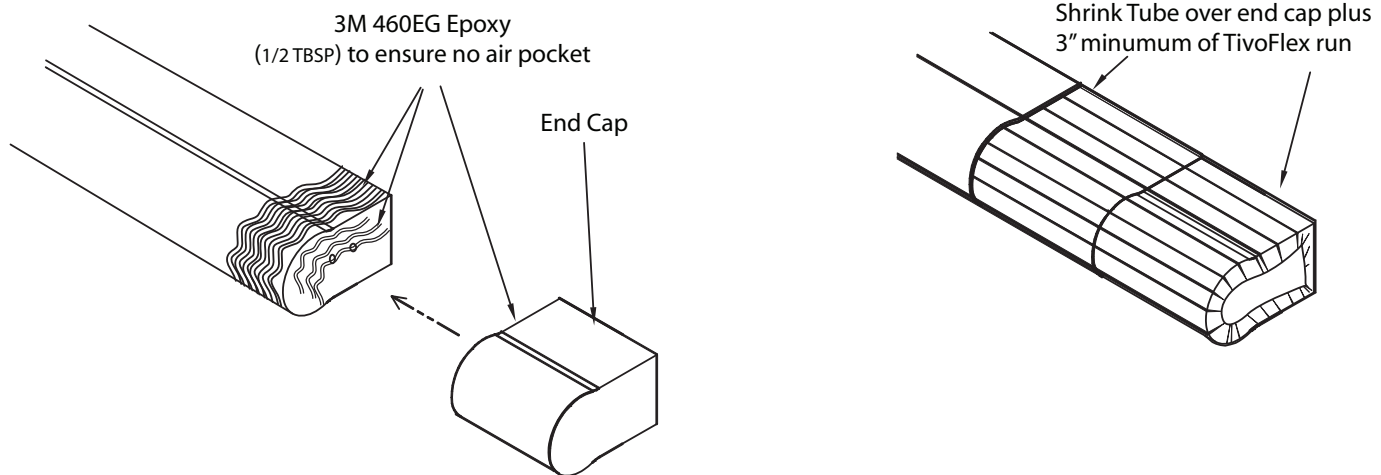
**Step 4:** If the design requires mounting clips for creating bends and arcs, first lay TivoFlex along desired area, then place mounting clips every 12 inches and apply screws (by others).

**Step 5:** For vertical and horizontal installations it is important to silicone the TivoFlex into the channel along the entire length of the product to prevent gradual stretching from gravity.

For vertical installations, it is recommended that the product is installed from the bottom upwards to prevent stretching during installation.

**Step 6:** TivoFlex is easily trimmable for field installation length adjustment. Be sure to cut only along marked lines on product sides.. Simply cut through with PVC Cutters and cover with end cap (see diagram 1) Do not cut while system is powered!

**Step 7:** Make connection between TivoFlex beginning of run to transformer 24V output. Power up.



### Diagram 1

Apply sealant generously to TivoFlex end-of-run. Fill end cap with 1/4" of sealant. Slide end cap onto TivoFlex end, then slide shrink tube over assembly with 1/2" of Shrink tube extending beyond TivoFlex run. Apply heat.

### Wiring Size

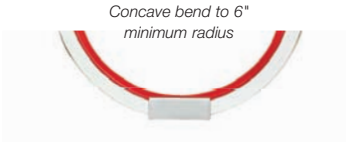
In order for low voltage circuits to operate properly, care must be taken in sizing the wire from the transformer to TivoFlex.

Tivoli recommends to locate the transformer as close to the TivoFlex as possible. Use 12 gauge wire and keep the transformer within 100' of the fixture.

### MAX FOOTAGE PER CIRCUIT

DESCRIPTION	CAT. NO.	WATTAGE PER FOOT	CURRENT DRAW	MAX FOOTAGE PER CIRCUIT
TivoFlex Plus	RED YELLOW ORANGE	1.8W/FT	4A	45'
	BLUE GREEN WHITE WARM WHITE	1.92W/FT		40'

### TIVOFLEX PLUS BEND RADIUS

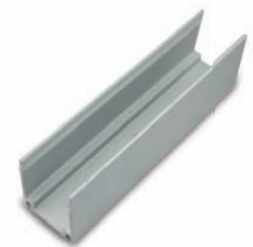


### TIVOFLEX PLUS CONNECTOR COMPONENTS

DESCRIPTION	CAT. NO.
Aluminum Mounting "U" Channel - 6.5' Length	TVFP-CHAN-6.5
Aluminum Mounting Clip - 3"	TVFP-CLIP
Notched Aluminum Channel - Horizontal 6.5'	TVFP-NOTCHH-6.5
Notched Aluminum Channel - Vertical - 6.5'	TVFP-NOTCHV-6.5
Weather resistant splice (Conch Connector)*	TVFP-CSP-24-WR



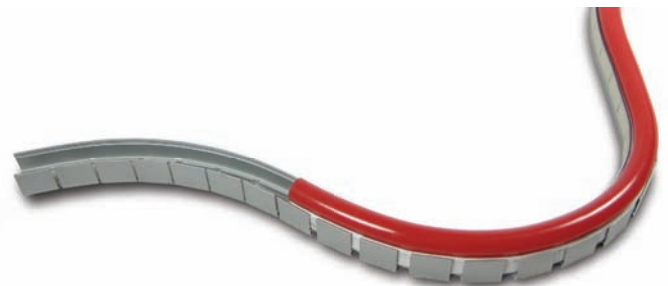
Aluminum Mounting Channel  
TVFP-CHAN-6.5



3" Mounting Clip  
TVFP-CLIP



Vertical Notched Channel  
TVFP-NOTCHV-6.5  
Concave bend to 6" minimum radius  
Convex bend to 4" minimum radius



Horizontal Notched Channel  
TVFP-NOTCHH-6.5  
Lateral bend to 1" minimum radius