

CAT:	FEET:
------	-------

TYPE:	PROJECT:
-------	----------



"MB" Medium based architectural channel is an industry standard. Medium based (E26) sockets are installed into high grade aluminum extruded channel, which provides lightweight rigidity and a solid connection to your structure.

**Features**

- Surface-mounted linear strip fixture
- UL Wet/Weather seal option available
- Heavy-gauge extruded aluminum
- Available in 6", 12", 18" and 24" OC standard spacing
- Wiring and components are concealed
- Anti-corrosion coated (Custom Finished on Request)
- Polished Aluminum, Satin Aluminum, Powder Coated White or Powder Coated Black
- Custom radial bends
- 2 3/16" x 2 3/16" Standard Profile extrusion available
- Optional 4 Channel chase wiring is available
- Maximum length of single fixture up to 12'
- Configurable for freight optimization
- Pre-wired for quick and easy installation
- 7/8" diameter knockouts on mounting side (custom optional end cap knockouts)

**Mounting**

Knock-out holes for screws are provided every 24" along mounting face of channel.

**Applications**

Ideal for marquee, make-up mirror illuminated frames, porte-cochère, borderline, amusement parks, casinos and bridge applications. Use for indoor and outdoor applications.

**Warranty**

3 years



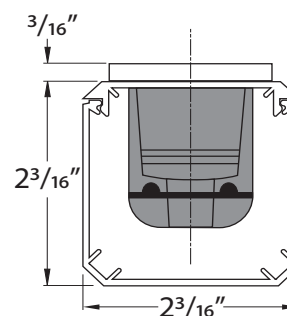
**Technical Information**

Socket Spacing OC*	6", 12", 18", 24"
Order Increments	1'
Operating Voltage	120V AC/ 240V AC
Material	Aluminum Alloy
Finishes**	Satin or Polished Aluminum, Black or White Powder Coated
Sockets	Medium Base, E26/E27
Lamps (By others)	60W max

\*Custom lamp spacing available (consult factory)

\*\*Custom paint or anodizing available (consult factory)

**Profile Dimensions**



Medium Base Socket

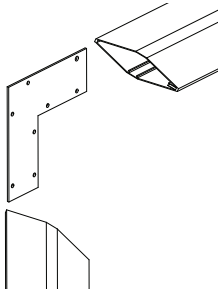
**Ordering Information**

AC Standard Architectural Channel maximum length 12'

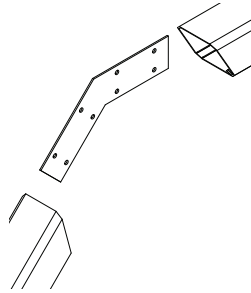
PRODUCT CODE	SOCKET TYPE	LAMP SPACING	FINISH	OPTIONAL 2
<b>AC</b>	<b>MB</b>			<b>WS1</b>
AC = Standard Architectural Channel	MB = Medium Base Socket Strand	06 = 6" OC 12 = 12" OC 18 = 18" OC 24 = 24" OC	PA = Polished Aluminum* SA = Satin Aluminum BK = Black Powder Coat WH = White Powder Coat	Required for Outdoor Applications

\* Consult Factory for extended lead time.

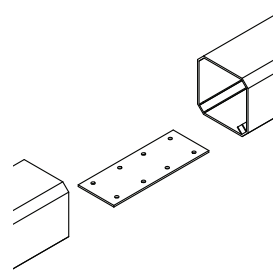
## Mounting Accessories



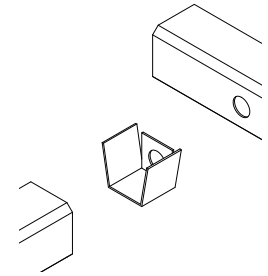
**INTERNAL 90° BRACKET**  
**AC-90**  
Flat 90 (Standard)



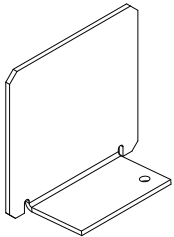
**INTERNAL 45° BRACKET**  
**AC-45**  
45° Bracket (Standard)



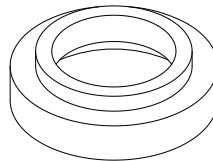
**INTERNAL CONNECTOR**  
**AC-180**  
Internal Connector (Standard)



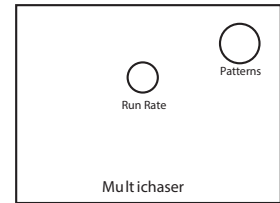
**INTERNAL T-BRACKET**  
**AC-T**  
T Bracket (Standard)



**END CAPS**  
**STANDARD PROFILE**  
**AC-EC-SA**  
Satin Aluminum  
**AC-EC-PA**  
Polished Aluminum  
**AC-EC-PW**  
Powder Coated White  
**AC-EC-PB**  
Powder Coated Black



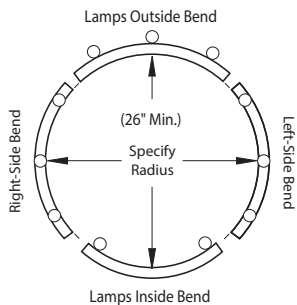
**WEATHER SEALING**  
**WS-1**  
Weather Seal Gasket  
Factory pre-installed only.



**CHASE CONTROLLER**  
**CC-120V**  
120V  
4 Channel , 8 Pattern  
Chase Controller

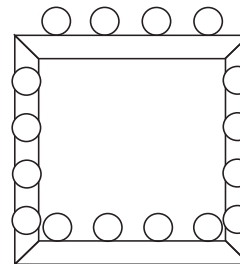
## Channel Configurations

### Factory Radius



**RADIUS CHARGES**  
**RADIUS**  
Radius bend set up charge (Over 3' Radius)  
**RADIUS-3**  
Radius bend set up charge (Under 3' Radius)  
**R-UNITS**  
Radius unit charge, Per 8' Max length  
**AC-RADIUS**  
Internal Bracket (Standard Channel)

### Factory Miters



**AC-MITER**  
Factory Miter Cut  
Standard Profile

**NOTE:** Dimensional drawings with lamp orientation required.