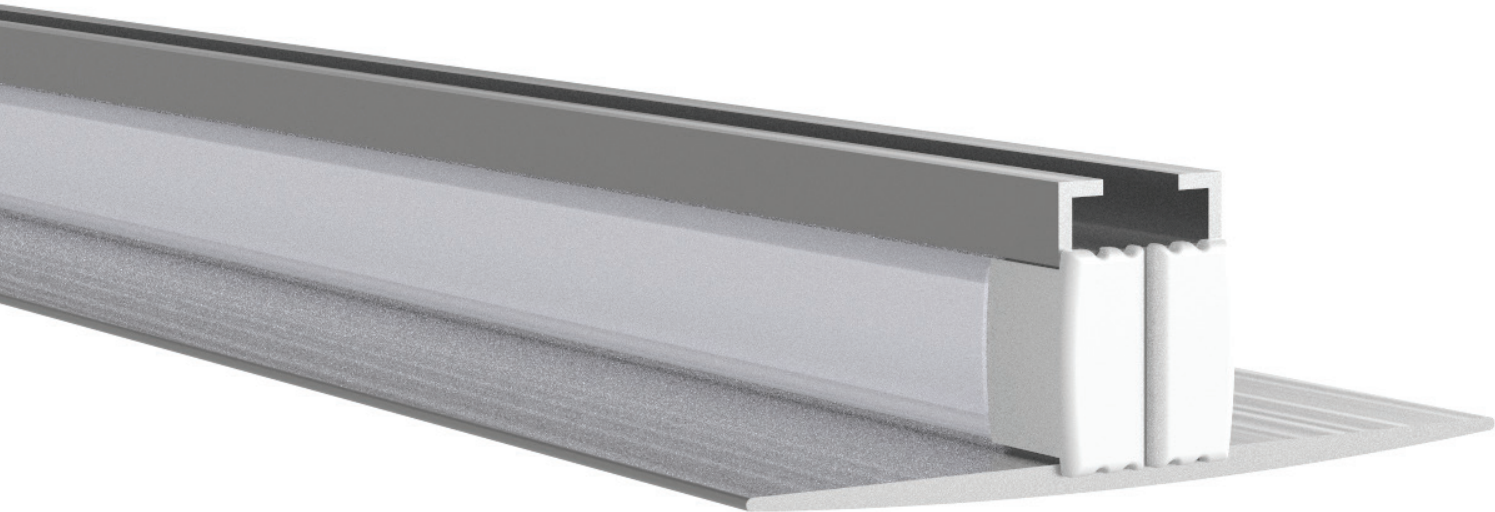
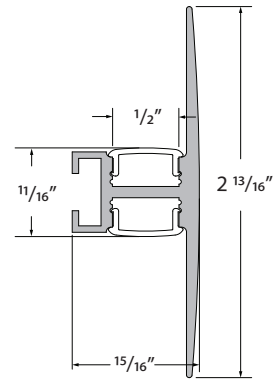
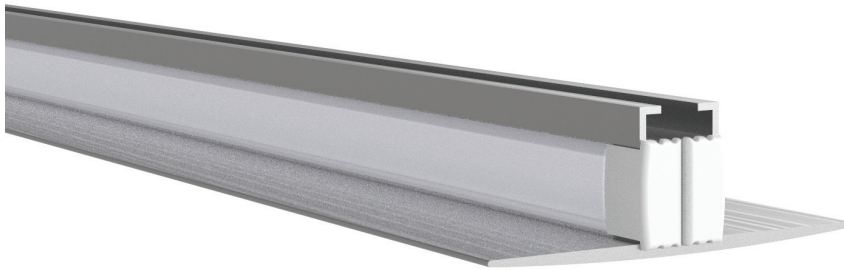


DEWAR

Design Guide



Profile & Dimensions



Available TivoTape Options - Indoor

DEFINE
LB
SB
HO

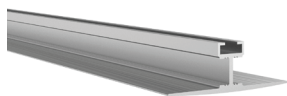
ELITE
SB
HO
VHO

ELITE+
Standard
Pro
Vision
Flow

FUSE24
RGB
RGBW

FUSE12
PiXEL RGB

Ordering Information



DWAR-CHAN-SLV-6.5
Anodized Aluminum Extrusion,
available in 6.5' lengths



DWAR-LNS-XXX-6.5
XXX = OPL (Opal), CLR (Clear),
DIF (Diffuser)
Lens, 6.5' Lengths



DWAR-EC-01
Solid End Cap

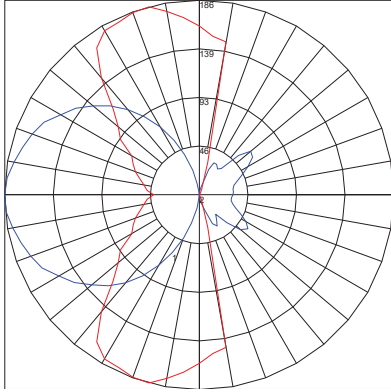


DWAR-EC-02
Powerfeed End Cap

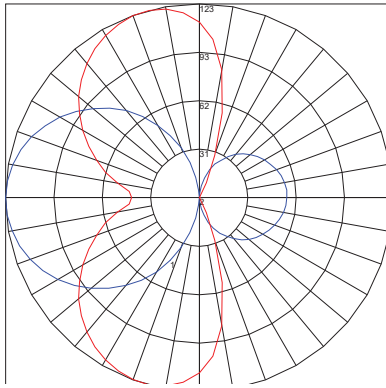


DWAR-CLP-SLV
Clip, Metal

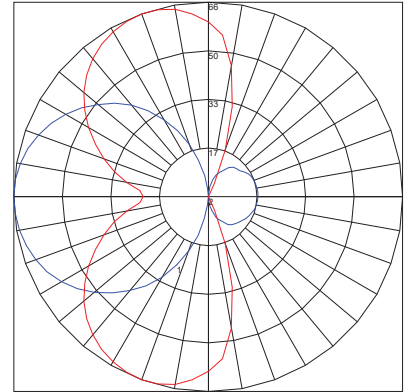
Photometrics (based on 30K HO Elite)



DEWAR WITH CLEAR LENS
Lumens per foot: 674.70
Watts per foot: 7.71
CRI : 94.7
Peak Candela: 185.84



DEWAR WITH DIFFUSED LENS
Lumens per foot: 537.38
Watts per foot: 7.73
CRI : 95.3
Peak Candela: 123.39



DEWAR WITH OPAL LENS
Lumens per foot: 297.85
Watts per foot: 7.76
CRI : 97.9
Peak Candela: 66.47

